



CELEBRATE

AN EVENING UNDER THE STARS

**ORANA IS
TURNING 75**

2025 MARKS OUR
75TH BIRTHDAY

**NDIS
LEGISLATION
CHANGES**

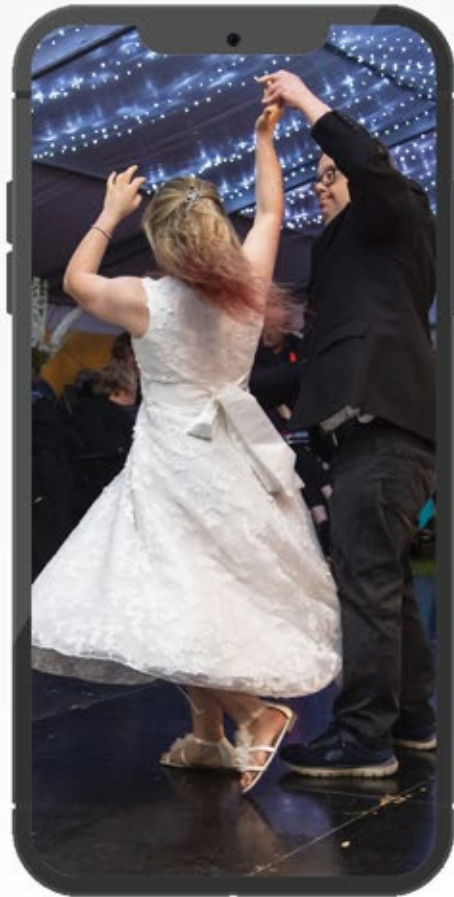
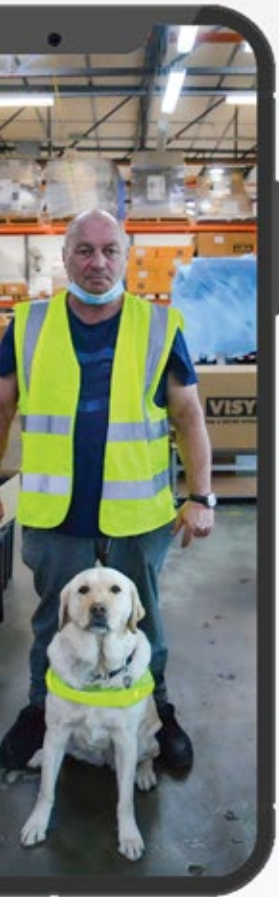
HOW THEY EFFECT YOU

**MERRY
CHRISTMAS**

ORANA'S HOLIDAY
CLOSURES



FOLLOW US ON SOCIAL MEDIA!



IN THIS ISSUE



COVER STORY

An Evening Under the Stars 4 - 7

WHAT'S ON

Listen in this Summer 27
In the Community 28
2025 Events Calendar 29

HOME

Your New Home 30-35

FEATURES

NDIS Legislation Changes 8 - 9
Spotlight on SIL - Darren Munro 10 - 11
Orana: Celebrating 75 Years of Empowerment in 2025 12 - 13
Supported Employment Vacancies 14 - 15
Celebrating Down Syndrome Awareness month with DSSA 16 - 17
It's a Dance Down Christmas 18 - 19

Club Strike Wraps up 2024 20 - 21
Spooky Season at Club Slick 22
A Community Christmas 23
Inclusivity by the Sea Accessible Beaches 24 - 25
Orana's Christmas Closures 26



AN EVENING

Under THE *Stars*



CELEBRATING INTERNATIONAL DAY OF PEOPLE WITH DISABILITY!

An Evening Under the Stars made a triumphant return in 2024, delivering a celebration that blended elegance and inclusivity. On a lovely, warm Friday evening on November 29th, as the last blooms of spring filled the air and the stars began to shine, we gathered to celebrate International Day of People with Disability.

The event was held on the

picturesque lawns of the historic Ayers House, providing an excellent opportunity for people from all walks of life to come together in the spirit of inclusion. It was a night of delicious food, new connections, community spirit, and plenty of fun, laughter, and dancing.

An Evening Under the Stars is more than just a celebration; it's a time to honour International Day of People with Disability. The event recognises the diversity and potential within our community, celebrating inclusivity and the invaluable contributions of people with disability to our workplaces, societies, and everyday lives.

Our Orana Ambassadors—Amanda Reilly, Josh Morpeth, and Ryan Battersby—served as emcees for the evening, bringing warmth and charisma to the event, along with a show-stopping drum solo. Their extraordinary efforts, dedication, and rehearsals paid off as they captivated the audience and ensured the night ran smoothly.

Orana's Chief Executive Officer, Jim Lui, shared his thoughts on the significance of the event, highlighting the privilege of celebrating diversity, inclusivity, and our shared vision of a future where everyone is empowered, respected, and included. He reflected that An Evening Under the Stars symbolises the unique light each individual brings to the world, while we all shine in different ways, together we create something bright and enduring.

Distinguished guest, the Honourable Nat Cook, Minister for Human Services and Minister for Seniors and Ageing Well in South Australia, delivered a heartfelt speech. Drawing on her personal experiences and childhood, she emphasised the lasting importance of improving outcomes for individuals, one person at a time.

Inclusivity lies at the heart of Orana's mission. This event is not just a celebration but also an opportunity to create a fun, safe, and accessible space for our community. It represents our commitment to fostering an inclusive society, breaking down barriers, and building a better future.

Each guest received a meaningful take-home gift reflecting the work we do at Orana. Clients in our Community Options programs at Port Augusta,



Port Augusta, Ridleyton, and Para Hills West lovingly hand-painted terracotta pots, while Orana employees at our Loxton business services site propagated a range of indoor plants. These gifts came together as beautiful potted plants for guests to cherish.

The lively band, Wild Side, kept the dance floor buzzing all night with classic tunes and energetic numbers, to keep everyone's feet moving.

Thank you to everyone who joined us to celebrate diversity, inclusivity, and International Day of People with Disability. We're already looking forward to next year's An Evening Under the Stars, which will coincide with Orana's 75th anniversary, a milestone we're looking forward to celebrating with you!





NDIS LEGISLATION CHANGES

In 2024, the Australian Government implemented significant changes to the NDIS to address concerns regarding the scheme's rapid expansion and to guarantee that support is provided to those most in need. The primary objectives of these reforms are to further refine the criteria for eligibility, implement measures to prevent the misuse of funds, and establish the definition of eligible supports.

THE NEW DEFINITION OF NDIS SUPPORTS

Originally intended to provide support to people with permanent and significant disability, the NDIS has since expanded to encompass a variety of diagnoses, resulting in an exponential expansion of the scheme. To address this, the Bill introduced a revised definition of NDIS supports, which offers more precise guidance on the permissible use of NDIS funding

The objective of this delineation is to remove ambiguity and ensure that funds are allocated appropriately by specifying which services and items the NDIS may fund.

- *Approved Supports:* This category encompasses services that are specifically designed to assist individuals with disabilities, including specialist disability housing, eligible assistance animals, and early intervention services for children.

- *Excluded Supports:* Services that are not directly related to a disability or lack evidence-based support, such as alternative therapies like crystal healing, lifestyle products like vapes, and non-disability-related expenses like concert tickets and holidays.
- *Replacement Supports:* There is also a "substitution" process that allows participants to request alternative support for items that are not typically covered by the NDIS. This works with two different types of supports.

1. Standard commercially available household items.
2. A smartwatch, tablet, smartphone, or application designed to make something easier to use or communicate.

CHANGES IN NDIS PLANS AND FUNDING

New NDIS plans will include total funding amounts, specific funding components, and defined funding periods.

Initially, all new plans are set for a 12-month period, with the option of extending the duration later.

When a participant receives a new plan, it will include a budget for all the supports in the plan. The current plans, which show supports line by line, will be modified to reflect this. The change clarifies how much money is available in a

participant's plan and how long it should be used for. However, current plans will be unaffected. In accordance with current funding rules, participants will be unable to spend more than the amount set aside in their plan without having it reevaluated. Furthermore, any funds that are not used will be carried over to future funding periods within a plan. However, unused funds will not be carried over to new plans, and future funding periods cannot be moved forward.

ELIGIBILITY REASSESSMENT

To ensure that NDIS resources are allocated to people with significant and permanent disability, the amended NDIS Act allows the NDIA more authority when conducting eligibility reassessment. The information requested must be "reasonably necessary" to determine eligibility.

NEW PLANNING FRAMEWORK

A new planning process will outline how to determine needs, create flexible budgets, and access the NDIS. Automatic access to the NDIS will no longer be granted based solely on specific medical diagnoses, even though eligibility requirements remain unchanged.

To be eligible for the NDIS, individuals must first undergo a needs-based assessment



that demonstrates they have a significant functional impairment, which considers how their disability affects their day-to-day life.

The new laws introduce 'old' and 'new' framework plans as part of the transition to a new process for setting budgets.

OLD FRAMEWORK PLANS

Anyone who receives a new NDIS Plan after October 3, 2024 will have a 'Old Framework Plan'. These will differ from current plans in the following ways:

- Plans will be no longer than 12 months and will include a total funding amount for all supports, not individual line items.
- New plans will include a total budget amount. They specify the total funding available in a plan as well as the duration of the funds.
- Supports can be categorised into one or multiple groups.
- In exceptional circumstances, a request for payment beyond allocated funding may be made.

A participant will follow an 'old framework plan' until rules are developed, and the

new planning framework is implemented.

NEW FRAMEWORK PLANS

New Framework Plans will not be available until after the new planning framework is created. Over time, current participants will transition to New Framework Plans. New Framework Plans will:

- Include a flexible budget, based on support needs assessments. The NDIS will arrange the assessment.
- Add "funding periods" to indicate how frequently you can access a specific amount of your budget or funding component amounts. In this case, you may receive a longer plan, such as a three-year plan with three funding periods of one year each. Unused funds will be carried over to the next funding period in the same plan.

IMPAIRMENT NOTICES

As of January 1, 2025, all new participants will receive an impairment notice that lists their specific disability/s or significant impairment. Participants already on the NDIS will receive an impairment notice when they

transition to a new plan. It will have a list of impairments that meet the needs for disability and/or early intervention.

Any supports purchased with your NDIS funds must meet the new definition of NDIS supports and be relevant to the impairment listed on your impairment notice. This change acknowledges that people with disability who have the same diagnosis may have different support needs.

Although the 2024 NDIS reforms are designed to guarantee the program's sustainability and equity, they present both opportunities and challenges for participants and their families. To successfully navigate this new landscape, proactive planning, resourcefulness, and active engagement with the disability community will be necessary.

Learn more about NDIS legislative changes through the NDIS website or use the QR code below to access the summary of NDIS legislative changes.



SPOTLIGHT ON SIL DARREN MUNRO



MEET DARREN: THRIVING IN SUPPORTED INDEPENDENT LIVING WITH ORANA

Darren Munro, a valued Orana employee based at our Netley Business site, has been calling Galway Apartments home since mid-2020. Galway Apartments, one of Orana's Supported Independent Living (SIL) homes, has been a game-changer for Darren, helping him find the perfect balance between

independence and support.

With tailored assistance for tasks like shopping, cooking, and keeping his apartment clean, Darren has developed essential life skills in a safe and nurturing environment. These skills have not only boosted his independence but also his confidence in dealing with day-to-day responsibilities.

The apartment complex itself is a vibrant community. Tenants enjoy a thriving community garden, where fresh vegetables like pumpkins and cherry tomatoes flourish, and a barbecue area perfect for group meals and social gatherings.

For Darren, it's the friendships that stand out the most. He's built a close-knit group of friends both at the complex and nearby,

and he treasures the time they spend together. One of his favourite pastimes is heading to the SANFL matches to cheer on the Eagles, and he even attended





a grand final—though he was a bit disappointed when Glenelg took the win!

What Darren loves about living at Galway Apartments is the sense of connection. “There’s always someone around for a chat,” he shares, whether it’s a fellow tenant or a friendly staff member. Plus, the location couldn’t be better—his short walk to work every day is an added bonus.

Darren’s involvement in the Orana community doesn’t stop at SIL. Through Orana’s Short Breaks program, he’s enjoyed exciting experiences, including trips to Brownhill Creek, West Beach, and Semaphore. From bowling adventures to attending Fringe shows, Darren has made the most of these opportunities and is eager to do even more in the future.

One of his proudest moments? Scoring a goal as part of Orana’s Soccer League! It was a confidence-boosting experience that also deepened his bond with the team.

When asked what he’d say to anyone considering Supported Independent Living, Darren



doesn’t hesitate: “They should do it... it’s a nice place to live.”

SIL at Orana isn’t just about providing support—it’s about empowering individuals to live life on their own terms. With a strong sense of community, lasting friendships, and opportunities to learn and grow, it’s a place where people like Darren can truly thrive.

Learn more about Orana’s Supported Independent Living program.

Head to our website or page 30 for our current vacancies, or give us a call on (08) 8375 2000.



ORANA: CELEBRATING 75 YEARS OF EMPOWERMENT IN 2025

As we near 2025, Orana is poised to celebrate a remarkable milestone: our 75th anniversary. This important event marks 75 years of steadfast commitment to empowering people with disability and fostering inclusion.

Since its founding in 1950, Orana has emerged as a source

of support and opportunities for individuals across South Australia.

Orana embarked on a transformative journey, motivated by a commitment to create meaningful opportunities for people with disability, allowing them to achieve their

fullest potential. Orana started as a humble organisation dedicated to education and training, but it has now evolved into a dynamic organisation offering a wide range of services, all aimed at increasing independence and dignity for people with disability.

Orana has profoundly shaped



how society views disability throughout the years by championing equal opportunity and inclusivity, while providing vital support to people with disability.

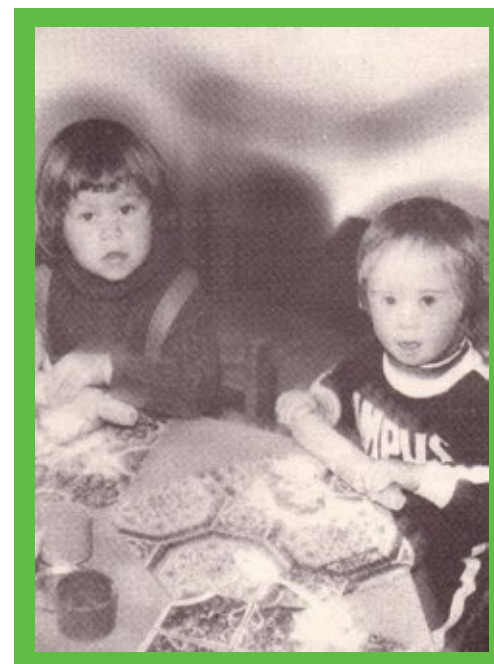
As Orana gears up for its momentous 75th anniversary celebrations in 2025, the organisation will take a moment to reflect on the remarkable milestones achieved and the challenges that have been adeptly overcome. The journey unfolds a narrative of resilience, innovation, and unwavering commitment to its fundamental values.

Orana expertly blends its deep-rooted heritage with a forward-thinking perspective, fostering a harmonious relationship between the past and the future. Orana is poised to embrace new opportunities in training, sustainable business practices, and innovative housing solutions, all while keeping a keen eye on the future. The dedication to creating an inclusive environment where every individual, irrespective of their abilities, can flourish remains unwavering.

Orana's 75th anniversary is a significant celebration, acknowledging both the

organisation and the resilience and achievements of the individuals it supports.

As the celebrations of 2025 commence, Orana is set to ignite a wave of inspiration, fostering increased support and collaboration. This momentum indicates that the next 75 years will hold equal importance to the earlier ones where we continue to persist in our efforts to foster a world filled in opportunities for everyone.





SUPPORTED EMPLOYMENT VACANCIES

**JOIN OUR AMAZING TEAM
AND BE PART OF A FRIENDLY,
INCLUSIVE ENVIRONMENT!**

Join a fun, supportive environment where you can develop new skills, earn a wage, and gain confidence while making new friends with Orana's supported employment.

We currently have multiple positions available at our Netley location for individuals to join our assembly and packaging team as supported employees, working with a well-known, major brand.

No prior experience is required. All necessary training will be provided on the job. All you need is a willingness to learn and the ability to work well in a team.

If you think you, a client, or someone else you know might be ideal for this job, please visit our website or give us a call at (08) 8375 2000. Inquiry forms are also available on our website.



WHY WORK AT ORANA?

Earn a wage

Increase your quality of life by earning a wage and having the freedom to spend it on what matters most to you.

Make new friends

A new job is a great way to meet people and make new friends. Participate in work activities and events to build a more fulfilling social life.

Learn new skills

Gain valuable experience while learning new skills that help you grow and achieve more.

Boost your confidence

Working boosts your confidence and sense of self-worth while helping you gain independence.

Live a new life

Start each day with purpose and enjoy the satisfaction of a good day's work.

WHAT WE OFFER

Full-Time Hours: Monday to Friday, 8:00 am to 4:00 pm

Supportive Team:

Comprehensive training provided, so you feel confident in your role

WHAT WE'RE LOOKING FOR

- Ability to stand for up to 7.6 hours, with some bending, lifting, and squatting.
- A team player with a positive spirit.
- Attention to detail to follow instructions carefully.
- Reliability and punctuality.
- A professional appearance to keep our workspace welcoming.
- Must have an NDIS Plan.

WHY JOIN US?

At Orana, we celebrate everyone's strengths and are committed to creating a supportive workplace where people with disability can thrive.

WANT TO LEARN MORE?

Call us at (08) 8375 2000 or head to our website for more information.



"I would absolutely 100% recommend people come to Orana, infact a few times I have said to people, come to Orana, we want people to come here, so I would 100%, 10 out of 10 reccommend Orana to anyone"

Josh Morpeth
Production Worker
Netley



SUPPORTED EMPLOYMENT VACANCIES

**JOIN OUR AMAZING TEAM
AND BE PART OF A FRIENDLY,
INCLUSIVE ENVIRONMENT!**

WHY WORK WITH US?

Earn a wage

Increase your quality of life by earning a wage and having the freedom to spend it on what matters most to you.

Make new friends

A new job is a great way to meet people and make new friends. Participate in work activities and events to build a more fulfilling social life.

Learn new skills

Gain valuable experience while learning new skills that help you grow and achieve more.

Boost your confidence

Working boosts your confidence and sense of self-worth while helping you gain independence.

Live a new life

Start each day with purpose and enjoy the satisfaction of a good day's work.



VACANCIES AVAILABLE NOW

PACKAGING & ASSEMBLY

Looking for a job where you're supported and truly valued? Join our Packaging and Assembly team! You'll take on a variety of hands-on tasks like packing, repacking, mailing, collating, weighing, filling, and heat-sealing - all in a role where your work really counts, and in a team that's got your back.

EXTERNAL SERVICES

Want a hands-on job that'll have you working outdoors and in the fresh air? Join our Gardening and Grounds Maintenance team! We have positions available across metro and regional South Australia. All you need is a love for the outdoors and an NDIS plan with supports in employment funding.

WHAT WE OFFER

Full-Time Hours: Monday to Friday, 8:00 am to 4:00 pm (Full-time/Part-time considered, Minimum 3 days per week)

Supportive Team: Comprehensive training provided, so you feel confident in your role.

WHAT WE'RE LOOKING FOR

Physical Ability: You should be comfortable standing for most of your shift (up to 7.6 hours), with some bending, lifting, and squatting. We're flexible and can adapt roles to fit your needs.

Team Spirit: We work closely as a team, working side by side and supporting each other.

Attention to Detail: We need people who can follow directions carefully.

Reliability: Being on time and dependable is important to us.

WHY JOIN US?

At Orana, we celebrate everyone's strengths and are committed to creating a supportive workplace where people with disability can thrive. You must have employment supports in your NDIS plan to be eligible.

WANT TO LEARN MORE?

Call us at (08) 8375 2000 or head to our website for more information.



"I would absolutely 100% recommend people come to Orana, infact a few times I have said to people, come to Orana, we want people to come here, so I would 100%, 10 out of 10 reccommend Orana to anyone"

Josh Morpeth
Production Worker
Netley



CELEBRATING DOWN SYNDROME AWARENESS MONTH WITH DSSA

October is Down Syndrome Awareness Month and Orana along with Down Syndrome South Australia marked the occasion with an inclusive barbeque in Croydon Park.

The first National Down Syndrome Awareness Month was recognised in October in the 1980s. It is a time to celebrate and honour individuals with Down syndrome, showcasing their abilities and accomplishments. The month is

not only about raising awareness but also advocating for acceptance and inclusion, while highlighting the achievements of people with the condition.

On Saturday, 26 October, Orana and Down Syndrome SA hosted a memorable barbecue

at Polonia Reserve Playground in Croydon Park.

The day featured a delicious sausage sizzle, with attendees encouraged to bring picnic rugs and chairs for a fun, family-friendly outing. The event fostered community



spirit, togetherness, and the opportunity to form new connections.

There were plenty of activities to enjoy, including face painting and body art by a local artist, as well as a balloon artist creating delightful creations for guests to take home.



A standout attraction was the petting zoo. Rainbow Animal Farm brought along a variety of animals, ranging from farm birds such as pigeons, ducks, and geese to fluffy white rabbits and adorable small goats, allowing everyone to hold, pat, and feed the animals.

It was a wonderful day filled with community spirit, acceptance,



fun, and even a little dancing.

Orana and Down Syndrome SA remain dedicated to fostering a safe, inclusive, and enjoyable environment while promoting awareness and acceptance within our community. Events like this barbecue play a vital role in building inclusivity and celebrating our vibrant community.

Thank you to everyone who joined us in celebrating and supporting individuals with Down syndrome. It was truly a heart-warming event, and we are so grateful to be part of such an inclusive and supportive community.

Finally, a special thank you to our amazing staff who volunteered their time and worked tirelessly to ensure everything ran



smoothly. Your dedication made this event possible.

We look forward to celebrating with you all again next year!



Orana and Down Syndrome SA also offer a playgroup and information session twice per school term at Leabrook and Parafield Gardens. Babies, toddlers, and pre-school children with chromosomal disorders, along with their families and caregivers, are warmly welcomed.

Children can enjoy games and activities in a safe and supportive environment, while families and caregivers have the opportunity to connect, share experiences, and access valuable information.

The 2025 dates are now available! Visit the Orana website for more details.

IT'S A DANCE DOWN CHRISTMAS



AN END OF YEAR CELEBRATION



DANCING THROUGH THE NIGHT

Monday, 16 December, marked our final Dance Down concert of the year at the Thebarton Community Centre. This special event is a wonderful opportunity for friends and family to witness the incredible progress of our dancers and celebrate their growth.

The festive spirit was in full swing, with the Christmas-themed

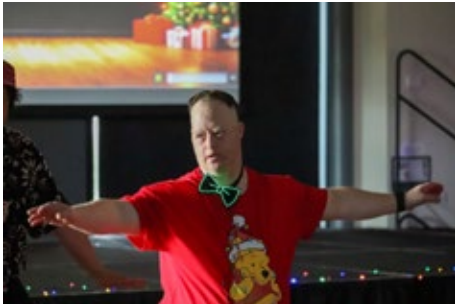
concert bringing loved ones together for a magical evening of outstanding performances. From Contemporary to Jazz and Rock 'n' Roll, the concert was a vibrant showcase of talent, dedication, and hard work.

Congratulations to all the performers who took to the stage and gave us a night to remember. Dance Down provides a fun and supportive environment that enhances rhythm, promotes a healthy body

image and self-confidence, tones muscles, and improves posture, balance, and coordination.

We're excited to announce that Dance Down will return in 2025 with two more concerts, giving these amazing performers another chance to shine on stage.





DANCE DOWN

Thebarton Community Centre
 Corner South Rd &
 Ashwin Pde,
 Torrensville

*Held Monday afternoon
 and evenings*

Juniors (aged 5 - 12)
 4.45 - 5.30pm with Robyn

**Advanced Contemporary/
 Conditioning (ages 13+)**
 5.30 - 6.15pm with Robyn

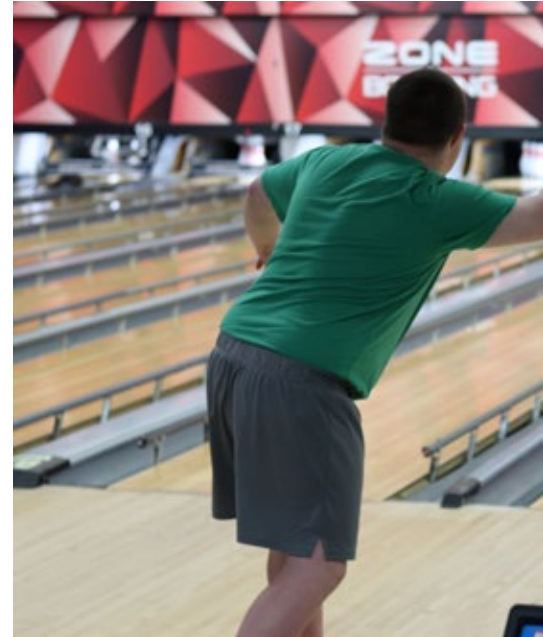
Jazz (ages 13+)
 6.15 - 7pm with Robyn

Hip Hop (ages 13+)
 6.15 - 7pm with Michelle

Rock'N'Roll (ages 13+)
 7 - 8.30pm with Michelle

Dance Down is held on
 Monday afternoons and
 evenings at the Thebarton
 Community Centre.

Dance Down Concerts
 July 14 and
 December 15, 2025



CLUB STRIKE WRAPS UP 2024



STRIKES, SMILES, AND SANTA CLAUS

On 6 December, Club Strike held its final event of the year, featuring a special visit from Santa to present the awards.

It was an exciting evening filled with fun, bowling, and plenty of Christmas cheer. Santa, along with Orana staff and volunteers, distributed the Club

Strike trophies and certificates to celebrate the progress and achievements of all our participants over 2024.

Club Strike is a monthly ten-pin bowling league that focuses on participation, fun, and social skill development to promote independence. With both junior and senior sessions, it provides an excellent opportunity for regular social interaction with peers.



A big thank you to everyone who joined us for the evening and to all those who contributed to making Club Strike such a fantastic event throughout 2024. We can't wait to see you all again in 2025!





Club Strike is a monthly ten pin bowling league supported by staff and volunteers from Orana.

2025 dates are now available. Head to our website or page 29 for the latest dates.

SPOOKY SEASON AT CLUB SLICK



A HALLOWEEN CELEBRATION

SPOOKTACULAR NIGHT FOR ALL

Our monthly Club Slick turned a little spooky on 18 October with a special Club Slick Spooktacular to celebrate Halloween. Dancers were encouraged to dress up for the occasion, and they certainly didn't disappoint. The dance floor came alive with a fantastic range of creative costumes.

It was a night of frights and delights, as participants grooved to an eclectic mix of music, from retro classics to the latest hits. The event was a wonderful opportunity to bring

our community together, get moving, and have plenty of fun.

Club Slick is held once a month on a Friday night at the Burnside Town Hall. It's an excellent opportunity for individuals living with disability to make new friends, develop skills, and foster a strong sense of community. The evenings are guided by a professional choreographer, ensuring participants can enjoy a mix of dance routines and freestyle segments.

We're thrilled to see Club Slick returning in 2025 with many more nights of boogieing to

come. A huge thank you to everyone who joined us for the Club Slick Spooktacular, including our amazing staff and talented instructors, for making it such a memorable event.

We can't wait to see you next year.

Club Slick 2025 dates now available. Registrations will open in the New Year.

Head to our website or page 29 for the latest dates.



A COMMUNITY CHRISTMAS



JOINING THE COMMUNITY AT CHRISTMAS.

Each year, a number of charity organisations around South Australia host free or low-cost community Christmas lunches.

If you are feeling lonely, are unable to prepare your own Christmas meal, or would simply like to get involved with your community, these shared lunches are perfect.

Together, guests will celebrate Christmas with decorations, music, a delicious meal, and great conversation.

Most lunch events require bookings in advance, so please get in touch with your local community event as soon as you can.

All events are run by volunteers who dedicate their time and goods to put on a traditional Christmas spread, complete with all the trimmings.

Find out where you can attend a Christmas lunch with your community this year:

City:

Hutt Street Centre, Christmas Day
25 Dec, Breakfast 7am - 9am,
Lunch 11:30am - 12:30pm
258 Hutt St, Adelaide

WestCare Christmas Lunch
25 Dec, 11am - 1pm,
11 - 13 Millers Court, Adelaide

North:

Salvation Army Golden Grove, Christmas Day Lunch
25 Dec, 12pm
99 Wynn Vale Drive, Wynn Vale

South:

MarionLIFE Christmas Day Lunch
25 Dec, 12pm
Marion Church of Christ, 24 Mary St, Mitchell Park
\$5 entry

East:

Campbelltown Council Christmas Dinner
25 Dec, 6pm - 9pm
172 Montacte Rd, Rostrevor

Regional:

Salvation Army Berri, Community Morning Tea
25 Dec, 9am - 11am
4 Wilson St, Berri

Keep an eye on local charity organisations and your local council for updates on any community Christmas lunches in your area.



INCLUSIVITY BY THE SEA ACCESSIBLE BEACHES

DISCOVER SOUTH AUSTRALIA'S ACCESSIBLE BEACHES

As the summer season begins and temperatures rise, Australians eagerly embrace the cherished tradition of basking in the sun at their local beaches.

The beach is not just a place to

relax and enjoy the refreshing water while savoring a delicious ice cream. It's also a vibrant environment that offers a wealth of sensory experiences—something that should be accessible to everyone.

In recent years, there has been a significant shift towards inclusivity on Australian beaches. Efforts to make these popular coastal destinations more accessible have led to the introduction of various amenities

and infrastructure improvements. These include beach wheelchairs, accessible bathrooms, pathways, enhanced parking facilities, and beach mats—all designed to ensure that everyone can experience the joy of the sea and sand without barriers.

Inclusive SA and Accessible Beaches highlight the accessibility features available at your local beach, making it easier for everyone to join in on the summer fun.



Check out these accessible South Australian beaches.

GLENELG BEACH

One of South Australia's most popular beaches and a short tram ride from the CBD, Glenelg has an abundance of cafes, restaurants and grassed areas.

Accessibility features:

- Beach access mat
- Beach wheelchairs and a floating wheelchair
- Beach walkers
- Accessible Beach Days are typically held in Glenelg, north of the jetty, during the summer. Contact the City of Holdfast Bay for details of accessible beach days.



HENLEY BEACH

Just a short distance from the CBD, Henley Beach is surrounded by beautiful restaurants, grassed areas and a stunning shoreline.

Accessibility features:

- Beach mats from Thursday to Sunday between October and Easter each year
- Mobi-Mat wheelchair parking
- Beach wheelchairs available for free half day hire from October to Easter
- Six accessible parking spaces near the beach
- Fully equipped Changing Place facility, BYO sling

NORMANVILLE

Located on the Fleurieu Peninsula, south of Adelaide, Normanville is a picturesque coastal town, flanked by grassed areas and cafés.

Accessibility features:

- Mobi-chair floating beach wheelchairs
- Slat style access platform
- Accessible parking

SEACLIFF BEACH

Located south of Glenelg, Seacliff Beach boasts a beautiful shoreline and is a short distance from the caravan park, Kingston Park and playground.

Accessibility features:

- Slat Type Access Platform
- Accessible Parking (One car space)
- Beach wheelchairs available
- Accessible change room

SEMAPHORE BEACH

Semaphore's white sands, family-friendly shallows and colourful shoreline make for a classic Adelaide beach escape.

Accessibility features:

- Accessible Beach Mat
- Multiple Beach Wheelchairs
- Four accessible parking spots
- Children's playground with Liberty swing
- Accessible change room located nearby

SEMAPHORE SOUTH

Semaphore South Beach is a lovely quiet beach which is easily accessible.

Accessibility features:

- Accessible Parking
- Accessible Beach matting
- Accessible Bathroom

WHYALLA FORESHORE

Part of the state's beautiful Eyre Peninsula, the Whyalla Foreshore welcomes guests with a number of cafés and grassed areas, perfect for a summer picnic.

Accessibility features:

- Beach mats are available on Saturday and Sunday between October and Easter.
- Beach wheelchairs are available for free use from 9.00am till 1.00pm Saturday & Sunday, from October to Easter.
- Four accessible parking spaces
- Fully equipped Changing Place facility, BYO sling.
- Accessible toilet

Find out more at
accessiblebeaches.com or
inclusive.sa.gov.au

ORANA CHRISTMAS CLOSURE

MERRY CHRISTMAS FROM THE TEAM AT ORANA!

Orana head office and business services sites will be closed over the holiday period.

Our Supported Independent Living, In-home, and essential services teams will continue providing support over the holiday period.

Please note the closure dates listed for all Orana head office and business services.

Business Services

Last day of production in 2024 is Wednesday 18th December.

First day of production in 2025 is Monday 13th January.

Community Options

Last day of services in 2024 is Thursday 19th December.

First day of services in 2025 is Monday 6th January.

Netley Head Office

Last day of business in 2024 is Friday 20th December.

First day of business in 2025 is Monday 6th January.

If you have any questions about our Christmas closures, please call before Friday 20th December on **8375 2000**.



LISTEN IN THIS SUMMER

OUR TOP FIVE PODCAST RECOMMENDATIONS



LISTENABLE FROM YOUR POCKET

Hosted by Paralympic gold medalist Dylan Alcott and Angus O'Loughlin, this podcast delves into real-life stories and relatable discussions about living with disability.



GROW BOLD WITH DISABILITY FEROS CAFE

Presented by Feros Care, this podcast celebrates resilience and triumphs through inspiring interviews.

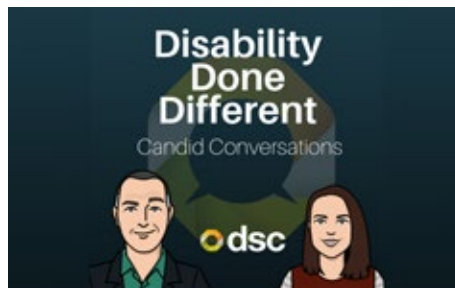


Brought to you by



DISABILITY DONE DIFFERENT: CANDID CON- VERSATIONS DSC

Hosted by a father and daughter duo they engage in talks on complex disability issues, blending humor with serious topics.



REASONABLE & NECESSARY SUMMER FOUNDATION

Dr. George Taleporos dives into all things NDIS, offering advice and expert views for navigating disability support.



ONE IN FIVE MELBOURNE DISABILITY INSTITUTE

One in Five explores some of the most complex issues facing people with disability today. In Australia, one in five people live with disability. The podcast gives voice to people with disability and asks about their experiences with employment, housing, the law, supporting families and early intervention.



Podcasts available through
Spotify and iTunes.

Want to share your favourite
movie or podcast?
Send us an email and let us
know you love it!

Let us know at
communications@orana.asn.au

IN THE COMMUNITY

JANUARY

SANTOS TOUR DOWN UNDER

WHAT: The Santos Tour Down Under is the first stop for the world's best cycling teams and riders, and the opening event of the UCI WorldTour. The 10-day cycling race brings both male and female professional cycling teams to race on the streets of Adelaide and regional South Australia

WHERE: Streets across SA

MORE INFO: tourdownunder.com.au



FEBRUARY

ADELAIDE FRINGE

WHAT: The Southern Hemisphere's largest arts festival is back for another 31 magical summer days and nights as it transforms Adelaide and greater South Australia, with a huge range of vibrant events spanning cabaret, theatre, comedy, circus, music, visual arts, workshops and so much more.

WHERE: Venues across SA

MORE INFO: adelaidefringe.com.au



MARCH

WOMADELAIDE

WHAT: WOMAdelaide – World Of Music Arts & Dance - is an iconic open-air festival celebrating cultural discovery in the heart of Adelaide's stunning parklands. It's a truly unique part of the Australian festival landscape, showcasing the best, the essential – and the surprising – in music, arts, dance

WHERE: Botanic Park / Tainmuntilla

MORE INFO: womadelaide.com.au



THROUGHOUT SUMMER

CHIHULY IN THE BOTANIC GARDEN

WHAT: Meander through the lush landscapes of Adelaide Botanic Garden, and experience a stunning exhibition by the world's most celebrated contemporary glass artist, Dale Chihuly. Featuring both free and paid experiences until the 29th of April there is something to suit everyone.

WHERE: Adelaide Botanic Garden

MORE INFO: botanicgardens.sa.gov.au/chihuly



2025 EVENTS

JANUARY

- 21 AFL Max
30 DSSA Family Meetings

FEBRUARY

- 7 Club Strike
7 - 9 Weekend Short Breaks
14 EI Playgroup - Leabrook
21 Club Slick
28 EI Playgroup - Parafield Gardens

MARCH

- 7 Club Strike
7 - 9 Weekend Short Breaks
11 ILS Family Meetings - Para Hills West
12 - 13 ILS Family Meetings - Netley
20 DSSA Family Meetings
21 EI Playgroup - Leabrook
21 Club Slick
22 Celebrate with Orana BBQ

APRIL

- 4 Club Strike
11 Club Slick
4 - 6 Weekend Short Breaks
15 - 17 School Holiday Short Breaks (*under 18*)

MAY

- 2 Club Strike
9 - 11 Weekend Short Breaks
16 Club Slick
16 EI Playgroup - Leabrook
22 DSSA Family Meetings
30 EI Playgroup - Parafield Gardens

JUNE

- 6 Club Strike
6 - 8 Weekend Short Breaks
10 ILS Family Meetings - Para Hills West
11 - 12 ILS Family Meetings - Netley
13 EI Playgroup - Leabrook
20 Club Slick

JULY

- 4 Club Strike
11 - 13 Weekend Short Breaks
14 Dance Down Concert
18 Club Slick
25 Trivia Night
31 DSSA Family Meetings

AUGUST

- 1 Club Strike
8 EI Playgroup - Leabrook
8 - 10 Weekend Short Breaks
15 Club Slick
22 EI Playgroup - Parafield Gardens

SEPTEMBER

- 5 Club Strike
9 ILS Family Meetings - Para Hills West
10 - 11 ILS Family Meetings - Netley
11 DSSA Family Meetings
12 - 14 Weekend Short Breaks
19 Club Slick
19 EI Playgroup - Leabrook
30 - 2 Oct School Holiday Short Breaks (*under 18*)

OCTOBER

- 3 Club Strike
10 - 12 Weekend Short Breaks
17 Club Slick
26 Orana Celebrates 75 Years
31 EI Playgroup - Leabrook

NOVEMBER

- 7 Club Strike
7 - 9 Weekend Short Breaks
14 EI Playgroup - Parafield Gardens
20 DSSA Family Meetings
21 Club Slick
28 An Evening Under the Stars

DECEMBER

- 2 ILS Family Meetings - Para Hills West
3 - 4 ILS Family Meetings - Netley
5 Club Strike
12 Club Slick
12 EI Playgroup - Leabrook
15 Dance Down Concert

YOUR NEW HOME AWAITS YOU

**ORANA HAS A NUMBER OF VACANCIES LOCATED
ACROSS METROPOLITAN SOUTH AUSTRALIA.**



Orana's SIL gives people with different support needs a safe place to live in the community, without giving up their independence.

Make a life that works for you:

Live the life you want knowing that you are well supported.

Balance freedom and safety:

Your well-being always comes first. You will have a safe and comfortable place to live while encouraging you to do the things you enjoy.

Build confidence to be more independent:

Orana will encourage you in a way that helps build your confidence and belief in your own abilities.

More social opportunities:

SIL provides a community where you can socialise with people who share common interests.

Orana values each person's uniqueness and doesn't take a one size fits all approach. The support you receive is adjusted to meet your changing needs, goals, and funding in your NDIS plan.

This can be anywhere from just a few hours each week and may include:

- Help with menu planning, shopping, and cooking
- Support attending activities in the community
- Assistance with attending medical appointments and taking care of medications
- Help in taking care of yourself

Want to see more?

**View all vacancies online at
oranaonline.com.au**

CLARENCE PARK

SPACIOUS HOME IN THE INNER SOUTH

Welcome to your new home!

We are delighted to announce the availability of two charming and spacious four-bedroom houses in our SIL community ready to rent.

These charming, purpose-built homes are situated together in a quiet, leafy suburb, close to the city, beach, shops, and medical centres. **House one** has space for **one female tenant**, while **house two** has room for **two male tenants**, to share.

SUPPORT BENEFITS

24/7 Support: Staff is available around the clock to provide personalised support.

Engaging Activities: Participate in a variety of community activities designed to promote social interaction and personal development.

Accessible Facilities: Our community is designed with accessibility in mind, ensuring a safe and accommodating environment for all tenants.



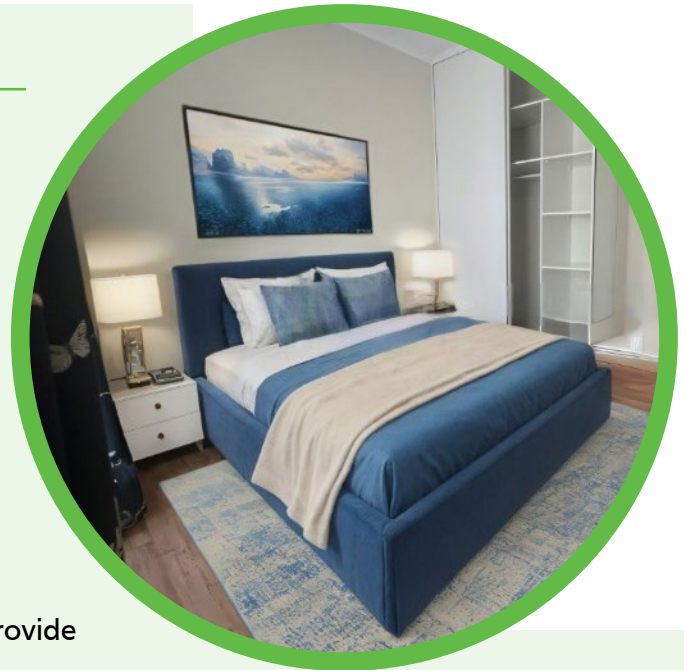
3 x Room
Available



5 x Other
Tenants



3 x Bathrooms



PROPERTY FEATURES

Good Sized Bedroom/s:

Bedroom offers ample space and natural light, providing a comfortable and inviting atmosphere. The bedroom on offer is not furnished.

Open Plan Living Area:

The living room seamlessly connects with the dining area, creating a versatile space for relaxation and socialising.

Fully Equipped Kitchen:

Includes appliances, plenty of storage, and a user-friendly layout, perfect for preparing meals with ease.

Outdoor Space:

Enjoy the communal recreational space, ideal for outdoor activities and enjoying the fresh air.



Tenant must be 18 years or older, and must have funding in their NDIS plan or funding from an alternative source.

Tenant will need to sign a tenancy agreement, pay rent and contribute to household expenses such as groceries and utilities.



Call our team on
08 8375 2000
to arrange a viewing
of this Supported
Independent
Living vacancy.

MARLESTON

APARTMENT STYLE LIVING - MULTIPLE VACANCIES

Welcome to your new home!

We currently have available units on both the upper and lower floors of our apartment building complex in Marleston.

Each inviting space is conveniently located next to a medical centre and pharmacy, providing easy access to essential services. Plus, with a bus stop conveniently located near the front of the apartments, transportation will never be an issue.

SUPPORT BENEFITS

Overnight Support: Staff is available overnight to provide personalised support.

Engaging Activities: Participate in a variety of community activities designed to promote social interaction and personal development.

Accessible Facilities: Our community is designed with accessibility in mind, ensuring a safe and accommodating environment for all tenants.



1 x Rooms
Available



14 x Other
Tenants



12 x Bathrooms



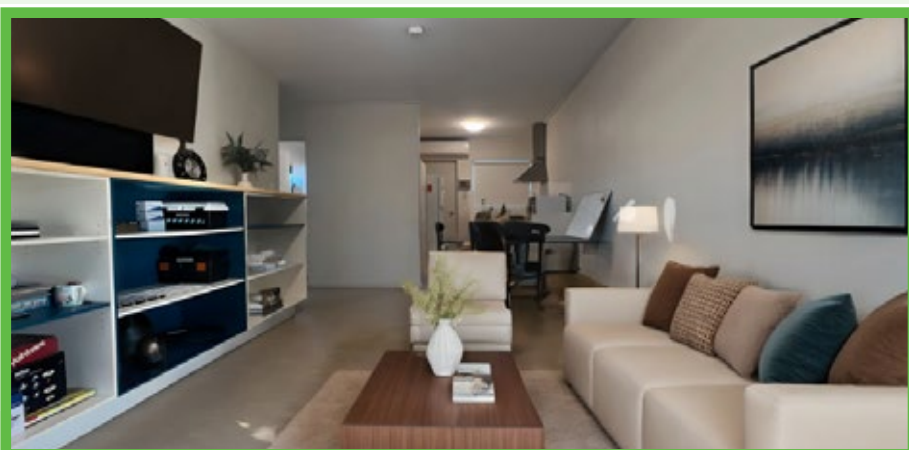
PROPERTY FEATURES

Good Sized Bedroom/s: Bedroom offers ample space and natural light, providing a comfortable and inviting atmosphere. The bedroom on offer is not furnished.

Open Plan Living Area: The living room seamlessly connects with the dining area, creating a versatile space for relaxation and socialising.

Fully Equipped Kitchen: Includes appliances, plenty of storage, and a user-friendly layout, perfect for preparing meals with ease.

Outdoor Space: Enjoy the communal recreational space, ideal for outdoor activities and enjoying the fresh air.



Tenant must be 18 years or older, and must have funding in their NDIS plan or funding from an alternative source.

Tenant will need to sign a tenancy agreement, pay rent and contribute to household expenses such as groceries and utilities.

The apartments are not suitable for persons with any impairment to mobility or using a wheelchair.



Call our team on
08 8375 2000
to arrange a viewing
of this Supported
Independent
Living vacancy.

LOXTON

ARCHITECTURALLY DESIGNED HOME

Welcome to your new home!

We are delighted to announce the availability of a two spacious houses in our Supported Independent Living (SIL) community in the Riverland area, **Gumview** and **Kurrajong**.

Gumview has a vacancy that would be ideal for a male NDIS participant. **Kurrajong** has two vacancies that would be suitable for two female NDIS participants.

SUPPORT BENEFITS

24/7 Support: Staff is available around the clock to provide personalised support.

Engaging Activities: Participate in a variety of community activities designed to promote social interaction and personal development.

Accessible Facilities: Our community is designed with accessibility in mind, ensuring a safe and accommodating environment for all tenants.



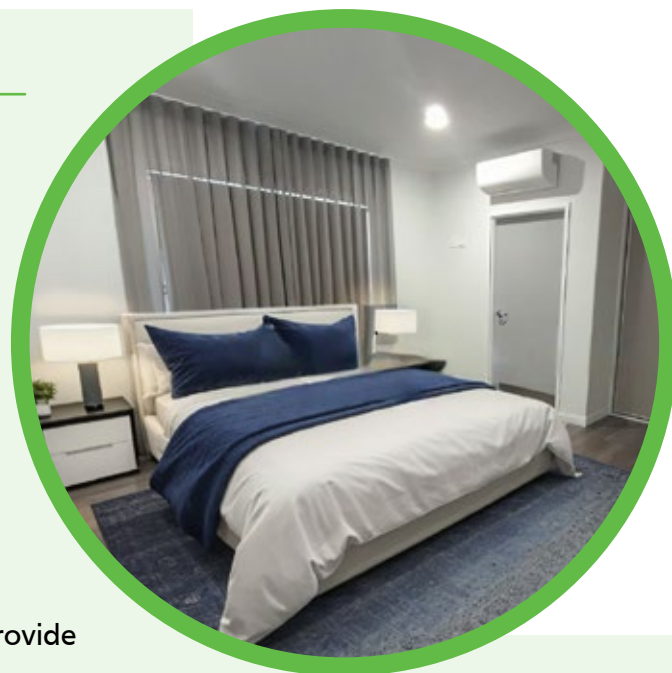
3 x Rooms
Available



3 x Other
Tenants



6 x Bathrooms



PROPERTY FEATURES

Good Sized Bedroom/s:

Bedroom offers ample space and natural light, providing a comfortable and inviting atmosphere. The bedroom on offer is not furnished.

Open Plan Living Area:

The living room seamlessly connects with the dining area, creating a versatile space for relaxation and socialising.

Fully Equipped Kitchen:

Includes appliances, plenty of storage, and a user-friendly layout, perfect for preparing meals with ease.

Outdoor Space:

Enjoy the communal recreational space, ideal for outdoor activities and enjoying the fresh air.



Tenant must be 18 years or older, and must have funding in their NDIS plan or funding from an alternative source.

Tenant will need to sign a tenancy agreement, pay rent and contribute to household expenses such as groceries and utilities.



Call our team on
08 8375 2000
to arrange a viewing
of this Supported
Independent
Living vacancy.

SALISBURY

ARCHITECTURALLY DESIGNED HOME

Welcome to your new home!

We are delighted to announce the availability of a charming and spacious two-bedroom house in our SIL community.

This home which opened in 2021, was part of a redevelopment project aimed at supporting independent living. Newly purpose-built houses, our Salisbury homes are modern and fresh, with a low-maintenance garden and community driveway.

SUPPORT BENEFITS

24/7 Support: Staff is available around the clock to provide personalised support.

Engaging Activities: Participate in a variety of community activities designed to promote social interaction and personal development.

Accessible Facilities: Our community is designed with accessibility in mind, ensuring a safe and accommodating environment for all tenants.



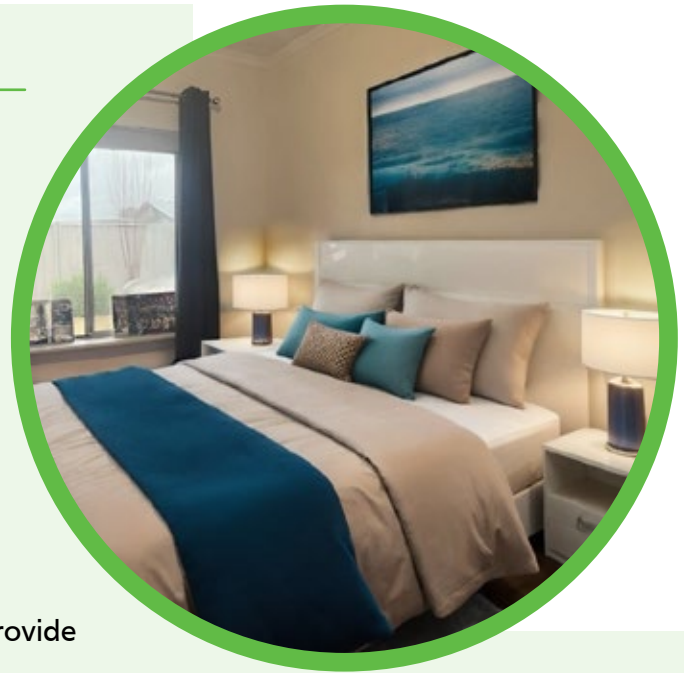
1 x Room
Available



1 x Other
Tenant



1 x Bathroom



PROPERTY FEATURES

Good Sized Bedroom/s:

Bedroom offers ample space and natural light, providing a comfortable and inviting atmosphere. The bedroom on offer is not furnished.

Open Plan Living Area:

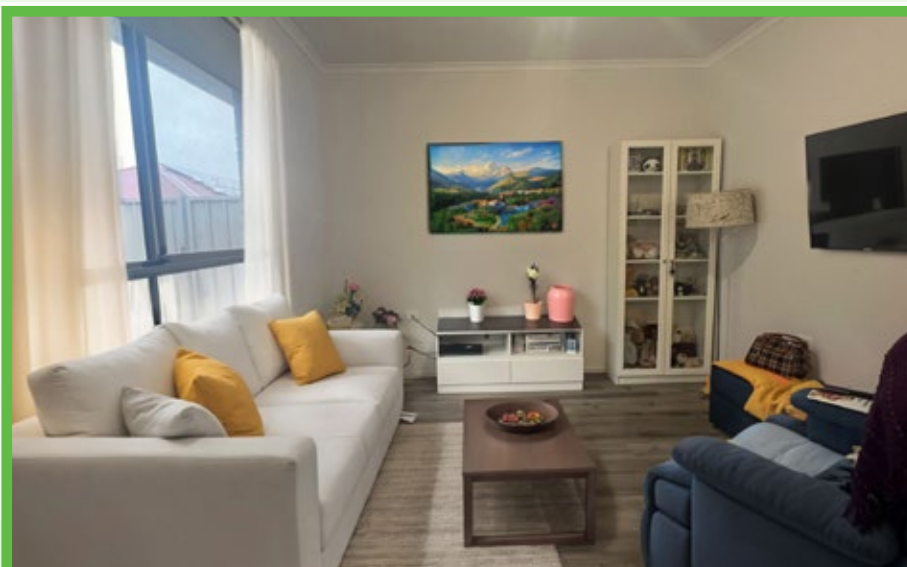
The living room seamlessly connects with the dining area, creating a versatile space for relaxation and socialising.

Fully Equipped Kitchen:

Includes appliances, plenty of storage, and a user-friendly layout, perfect for preparing meals with ease.

Outdoor Space:

Enjoy the communal recreational space, ideal for outdoor activities and enjoying the fresh air.



Tenant must be 18 years or older, and must have funding in their NDIS plan or funding from an alternative source.

Tenant will need to sign a tenancy agreement, pay rent and contribute to household expenses such as groceries and utilities.



Call our team on
08 8375 2000
to arrange a viewing
of this Supported
Independent
Living vacancy.

WHYALLA

WELCOME TO YOUR NEW HOME

We are delighted to announce this three-bedroom home all with ensuites and walk-in robes in our Supported Independent Living (SIL) community.

This spacious three-bedroom purpose-built home has TV points, phone/internet ports and ceiling fans, open plan tiled living, kitchen and dining area with separate lounge room, is available for rent. One bedroom is available for rent and would be ideal for a female NDIS participant.

SUPPORT BENEFITS

24/7 Support: Staff is available around the clock to provide personalised support.

Engaging Activities: Participate in a variety of community activities designed to promote social interaction and personal development.

Accessible Facilities: Our community is designed with accessibility in mind, ensuring a safe and accommodating environment for all tenants.



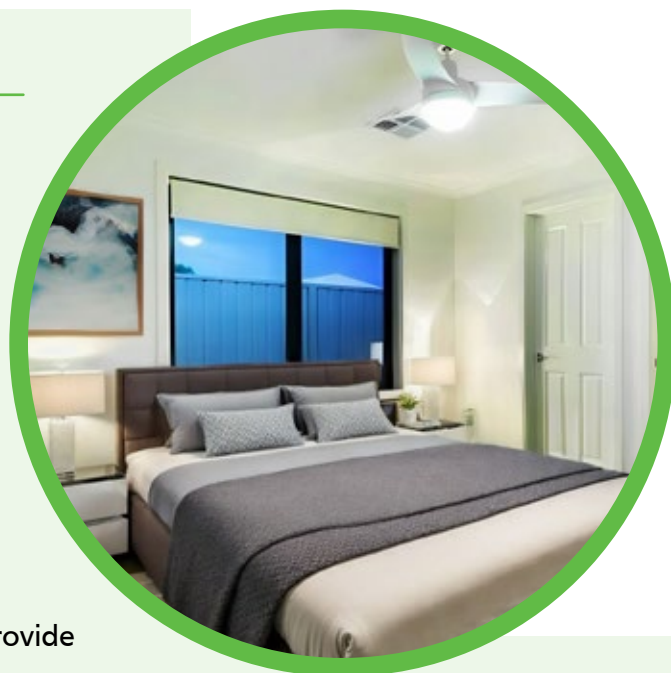
1 x Room
Available



2 x Other
Tenants



3 x Bathrooms



PROPERTY FEATURES

Good Sized Bedroom/s:

Bedroom offers ample space and natural light, providing a comfortable and inviting atmosphere. The bedroom on offer is not furnished.

Open Plan Living Area:

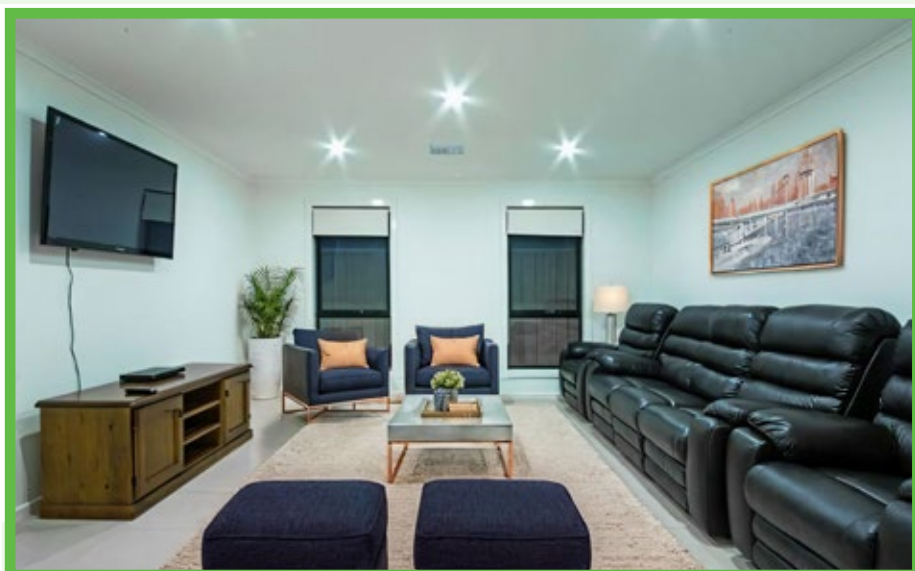
The living room seamlessly connects with the dining area, creating a versatile space for relaxation and socialising.

Fully Equipped Kitchen:

Includes appliances, plenty of storage, and a user-friendly layout, perfect for preparing meals with ease.

Outdoor Space:

Enjoy the communal recreational space, ideal for outdoor activities and enjoying the fresh air.



Tenant must be 18 years or older, and must have funding in their NDIS plan or funding from an alternative source.

Tenant will need to sign a tenancy agreement, pay rent and contribute to household expenses such as groceries and utilities.



Call our team on
08 8375 2000
to arrange a viewing
of this Supported
Independent
Living vacancy.

A woman with glasses and a blue floral dress is dancing at a social event. She has her arms raised and is smiling. In the background, another person is wearing a white face mask. The setting appears to be an indoor event space with tables and chairs.

**EVERYONE
HAS A STORY.
WHAT'S
YOURS?**

**DO YOU HAVE A STORY YOU
WOULD LIKE TO SHARE IN
ORANABILITY?**

Contact Communications at
communications@orana.asn.au
to find out how.