

# Oranability

CREATING OPPORTUNITIES



CELEBRATING

# WORLD DOWN SYNDROME DAY

**STRONGER TOGETHER**

ORANA AND BEERENBERG

**THREE MONTHS IN**

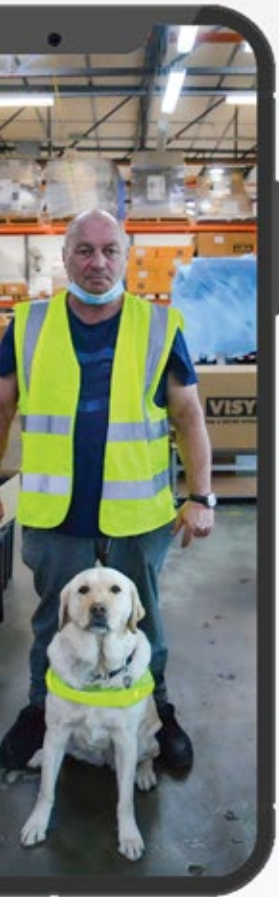
DEB DUTTON'S FIRST DAYS AS CEO

**FESTIVE CELEBRATIONS**

ORANA'S CHRISTMAS PARTIES

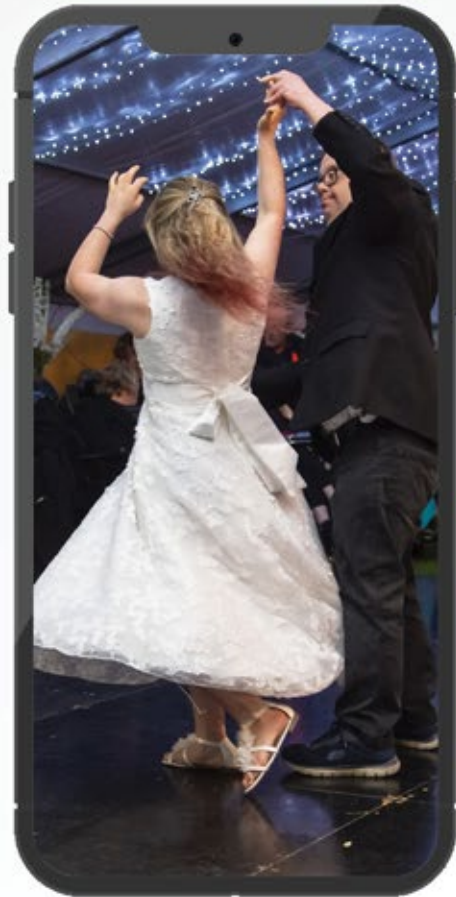
ORANAONLINE.COM.AU  
AUTUMN 2026

# FOLLOW US ON SOCIAL MEDIA!



LOOKING FOR  
A REWARDING  
NEW CAREER?

SWIPE UP TO APPLY



# IN THIS ISSUE

## COVER STORY

Coming Together for World Down Syndrome Day 4 - 5

## WHAT'S ON

Tune in this Autumn 21  
In the Community 22  
2026 Events Calendar 23

## HOME

Your New Home 24-27

## FEATURES

Celebrating Christmas Across the Orana Community 6-7

Three Months In: Listening, Learning and Looking Ahead Deb Dutton 8-9

Stronger Together: Beerenberg & Orana 10-13

Exploring Inclusive Pathways Together at Netley 14-15

Building a Life That Feels Like Home 16-17

Building Stronger Support Through Mental Health First Aid 18

Orana Community Highlights 19

Orana Wins the People's Choice Christmas Tree Festival 20





# COMING TOGETHER FOR WORLD DOWN SYNDROME DAY

## STANDING TOGETHER AGAINST LONELINESS

On March 21, communities around the world came together to celebrate World Down Syndrome Day, a day dedicated to raising awareness, celebrating people with Down syndrome, and promoting inclusion in every part of community life.

This year's theme, Together

Against Loneliness, highlighted an important message: everyone deserves meaningful relationships, connection, and a true sense of belonging. While loneliness can affect anyone, people with Down syndrome and other intellectual disabilities often experience it more frequently due to barriers to inclusion in schools, workplaces, and community

life. The theme encouraged individuals, organisations, and communities to work together to create welcoming spaces where everyone feels valued and connected.

To mark the occasion, Orana and Down Syndrome South Australia, hosted a World Down Syndrome Day BBQ on Saturday 21 March at Albert Greenshields Reserve in Ridleyton.



The event brought together families, friends, and supporters for a relaxed afternoon of celebration and community connection. Attendees enjoyed a classic sausage sizzle, sweet treats from the ice cream cart, and a variety of family-friendly activities including face painting, a balloon artist, and a popular petting zoo that delighted visitors of all ages.

More than just a day of fun, the BBQ was a chance for people to connect, catch up with friends, and meet others within the community. Events like this help foster the friendships and support networks that are so important in addressing loneliness and building a sense of belonging.



Creating opportunities for connection is a key part of our work. Whether through community events, advocacy, or support services, we are committed to ensuring people with Down syndrome have the opportunity to participate fully in their communities and build meaningful relationships.

A heartfelt thank you goes out to everyone who attended and helped make the day such



a success as well as all the dedicated staff and volunteers who worked behind the scenes to organise the event. Your presence helped bring the spirit of Together Against Loneliness to life.

We look forward to continuing to stand together for inclusion, connection, and community in the years ahead.



Learn more about Down Syndrome South Australia via our website.

[oranaonline.com.au](http://oranaonline.com.au)





# CELEBRATING CHRISTMAS ACROSS THE ORANA COMMUNITY

## SPREADING HOLIDAY CHEER

As 2025 came to a close, the Orana community gathered across the state to celebrate another wonderful year with a series of festive Christmas parties. From metro Adelaide to our regional sites, it was a season filled with connection, laughter and plenty of holiday cheer.

Our celebrations brought employees together to share delicious meals, enjoy beautifully decorated spaces and, of course, spend time on the dance floor. Music played, friendships were celebrated and there was no shortage of smiles as teams reflected on the year that was. These gatherings are always a special opportunity to recognise the hard work, achievements and

friendships that make Orana such a vibrant community.

One of the standout highlights of the festive season was our Port Augusta team's incredible success at the Port Augusta City Council Community Christmas Tree Festival, where Orana Community Options proudly took out the People's Choice Award.

We extend our heartfelt thanks to the staff and volunteers who helped organise and support these events across the state. Your dedication ensures our celebrations are inclusive, welcoming and full of joy.

Most importantly, thank you to our employees for bringing the energy, enthusiasm and festive spirit to every celebration. We're proud to celebrate alongside you and look forward to another fantastic year together.







# DEB DUTTON THREE MONTHS IN: LISTENING, LEARNING AND LOOKING AHEAD

It's hard to believe that three months have already passed since I stepped into the role of CEO at Orana.

During this time, I've had the opportunity to visit our sites, spend time with supported employees and clients, and connect with frontline teams and leaders. What has stood out most clearly is the genuine care that runs through Orana. Our purpose isn't just something we talk about or write down — it is something you can see, feel and experience every day.

## STAYING CONNECTED TO WHAT MATTERS

One of my priorities has been spending time in our services and connecting with people face to face. Those conversations have been one of the most valuable parts of my role so far.

I've shared lunches, heard about favourite footy teams, seen the pride people take in their work, and listened to families talk about the impact Orana has had on their lives. Moments like these

bring our purpose into sharp focus.

It is a commitment we should all feel proud of.

## WHAT I'VE OBSERVED

Through these visits and conversations, several things have stood out. Orana's greatest strength is its people and its purpose. Across our services and sites, I've seen a deep commitment to supporting people with disability to live meaningful,



connected and fulfilling lives. That sense of purpose is evident in the way teams approach their work each day. There is also strong pride in the organisation and the role it plays in local communities. Relationships with families, business partners and community groups are clearly valued, and they are an important part of Orana's presence across the regions we serve. I have also seen a clear focus on safety, quality and professionalism. Teams understand the responsibility that comes with the work we do and take that responsibility seriously. The care, respect and integrity shown across the organisation reflect the standards we hold ourselves to. What has impressed me most is the consistency of these qualities. Whether in supported employment, community services or corporate teams, there is a shared commitment to doing the right thing and delivering positive outcomes.

## BUILDING ON STRONG FOUNDATIONS

With these foundations in place,



our focus is on continuing to strengthen and grow. We are reinforcing our commitment to safety and quality across all services so that the people we support, and their families, can feel confident in the care and opportunities we provide. We are also investing in our workforce and leadership capability to ensure our teams are well supported and equipped for the future. Working closely with the Executive team and the Board, we are refining our strategic priorities to ensure Orana remains strong, sustainable and responsive to the communities we serve. This includes developing a clear roadmap for long-term growth while staying true to our purpose.

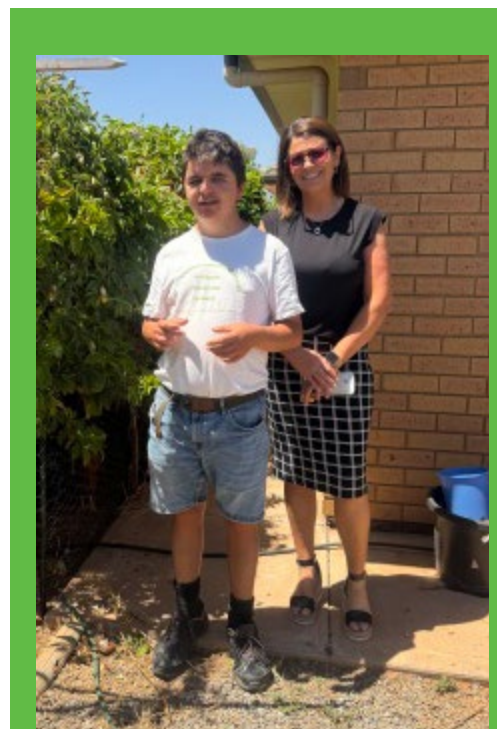
## LOOKING AHEAD

As we move forward, our direction is clear:

- Continue strengthening safety and quality across all services
- Support and develop our workforce
- Deepen community connections and partnerships
- Build a sustainable future

that honours Orana's legacy and purpose

Three months in, I am confident in the strength of this organisation and the opportunities ahead. Orana has a proud history and an important role in supporting people with disability to live fulfilling lives. I look forward to continuing this work alongside our dedicated teams, the people we support, families and community partners, as we build the next chapter together.



WELCOME TO THE FAMILY FARM  
**BEERENBERG**  
 SINCE 1839

# STRONGER TOGETHER: BEERENBERG & ORANA

When a trusted Australian brand partners with a purpose-driven organisation, the result is more than operational efficiency. It is a relationship built on shared standards, mutual respect, and a commitment to doing things properly.

That is exactly what the partnership between Beerenberg and Orana represents.

## A TRUE PARTNERSHIP BUILT SINCE 2020

The partnership began in 2020 and has continued to strengthen year on year. What started as a collaborative opportunity has developed into a trusted working relationship grounded in performance, communication, and shared values.

Beerenberg is known across Australia for the quality of its

jams, sauces, and condiments. As Beerenberg's Trade Marketing Manager Audry Nicolai explains, the business has grown from humble beginnings into a nationally recognised brand.

"Beerenberg is a family-owned business here in South Australia

in the beautiful Adelaide Hills. It started literally as a little shed... and grew to this amazing facility."

Today, the company produces around 100 products and welcomes visitors to the farm, where gift packs have become a



# “DEALING WITH ORANA HAS BEEN HONESTLY REALLY AMAZING.”

key part of the experience.

“We offer roughly 100 products... and now gift packs. That’s where Orana stepped in with us, because we’ve got those amazing gift bags to offer when people come to the farm and take a taste of country life home.”

As demand increased, assembling gift packs in-house became unsustainable. The business needed a partner who could maintain premium standards while supporting rapid growth.

“Beerenberg has experienced extremely rapid growth and a huge demand in gift packs... so we decided to seek help and ask Orana to step in.”

From the outset, the experience of working with Orana stood out.

“Dealing with Orana has been honestly really amazing. They have facilitated the process for us a lot.”

## QUALITY, CONSISTENCY, AND RELIABILITY

For Beerenberg, consistency is critical. Retail customers expect the same look, feel, and finish every time they pick up a product. That means processes must be clear, teams must be well trained, and quality control

must be embedded in daily operations.

From the beginning, premium standards were non-negotiable.

“Beerenberg being a premium brand, we needed to have really high standards. So that’s ticked for sure.”

Reliability is just as important as quality. “We just place the order. We know that it will be delivered on time to a high standard.”

That level of dependability allows Beerenberg’s internal team to focus on core operations. “We can just focus on our day-to-day work and be reassured that the job will be done and delivered on time.”

During peak periods, that reliability becomes even more important. When online sales surged and Christmas demand spiked, Beerenberg needed to scale quickly.

“We asked how they could help us double the production... and they came with the option of using both facilities. It ran just smooth. They delivered on time. The warehouse was ready to rock again.”

Flexibility, responsiveness and clear communication made the difference.



**“I WOULD DEFINITELY RECOMMEND ORANA... THEY’RE PROFESSIONAL. THEY DELIVER ON TIME. THEY RESPECT YOUR VALUES. THEY RESPECT THEIR PEOPLE.”**

### SHARED VALUES AT THE CORE

What stands out in this partnership is alignment.

Beerenberg has a strong focus on supporting local businesses and maintaining ethical work practices. Choosing Orana was a practical decision, but also a values-based one.

“Orana being in Adelaide, it was a no-brainer. It’s a win-win situation... it’s great to

know that we offer meaningful employment opportunities for people with disability.”

Over time, the relationship has evolved well beyond transactional service delivery. Orana has proactively suggested improvements, from custom pallet solutions that reduced product damage to upgraded printing options that enhanced presentation.

“Those solutions came from them naturally... it’s way more than just a contractor. It’s become

really a business partner.”

Audrey also highlights the trust placed in Orana’s leadership and teams.

“They know their people. They know what responsibility they can give to each person. This is a trust that we just put into their site managers.”

That trust has been earned through consistent performance.

“They have always delivered what we expected to a high standard.”





## MEANINGFUL WORK, REAL IMPACT

Through its co-packing role, Orana provides structured, supported employment that contributes directly to a nationally recognised brand.

Employees are not completing simulated tasks. They are performing real work that moves real products into the market. That brings pride, responsibility, and a genuine sense of contribution.

For Beerenberg, the benefit is clear.

“I would definitely recommend Orana... They’re professional. They deliver on time. They respect your values. They respect their people.”

For Orana employees, it is meaningful employment connected to a respected South Australian company.

For the community, it is a

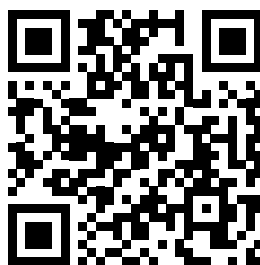
visible example of inclusive employment working in practice.

## LOOKING AHEAD

Long-term partnerships are built on performance. They continue because they work.

The collaboration between Beerenberg and Orana demonstrates how commercial outcomes and social impact can sit side by side. High standards are maintained. Production goals are met. And inclusive employment becomes part of everyday business operations. This is co-packing done properly.

[See the full testimonial on our YouTube Channel](#)



# EXPLORING INCLUSIVE PATHWAYS TOGETHER AT NETLEY



## EXPLOREING MEANINGFUL PATHWAYS TO WORK, LEARNING AND COMMUNITY PARTICIPATION

On Friday the 13th of February, we were proud to welcome individuals, families, carers and professionals to our Netley site

for our *Supported Employment, Alternatives & Pathways to Open Employment* information session, an afternoon focused on possibility, choice and connection.

The session provided a valuable opportunity to hear from a range of organisations about practical, real-world options that support different goals and journeys. From supported

employment and further education to volunteering and skill-building programs, the event highlighted the many pathways





available across South Australia.

A particular highlight of the afternoon was the guided tour of Orana's Netley facility. Visitors were able to see first-hand what supported employment can look like in action, gaining insight into our work environment, meeting team members, and learning how tailored supports help individuals build confidence, independence and job-ready skills.

This event would not have been possible without the leadership and dedication of **Volunteerability**, who hosted the session and played a significant role in bringing the event together. Their commitment to creating inclusive opportunities and fostering community partnerships was instrumental in making the afternoon such a success. We are incredibly



grateful for their collaboration and shared vision.

We would also like to sincerely thank our guest presenters and partners: **JobEdge, Community Bridging Services (CBS) Inc., Enable College, Multicultural Communities Council of South Australia, and TAFE SA.**

Each organisation shared valuable insights, practical information and encouragement, helping attendees better understand the diverse supports available to help people move toward open employment and other meaningful outcomes.

Most importantly, thank you to everyone who came along, asked questions, shared experiences and contributed to the positive energy of the afternoon. Events like this remind us that building inclusive communities

is a collective effort. When organisations collaborate and families feel informed and supported, real opportunities are created.

Together, we will continue the conversation about inclusive pathways, ensuring people with disability have access to the information, support and encouragement they need to build bright and confident futures across South Australia.



Learn More about our Supported Employment opportunities and pathways via our website



# BUILDING A LIFE THAT FEELS LIKE HOME



## GROWING CONFIDENCE, ONE DAY AT A TIME

Mathew doesn't make a lot of noise about his achievements. He doesn't need to.

His life speaks for itself.

At Orana's Whyalla Supported Independent Living (SIL), Mathew has built something steady and real. A home he's proud of. A garden that keeps growing. A routine that gives him purpose. And a life outdoors that fills him with energy.

## A HOME THAT FEELS LIKE HIS

When Mathew says, "I love my house," he means it.

His home isn't just somewhere to stay. It's a space he's shaped with care. He's made small

changes over time that he's proud of, artwork he's chosen himself, and music that plays in the background at the end of a long day.

It's comfortable. It's creative. It's his.

After a busy morning out fishing or working in the garden, Mathew enjoys coming back to a space where he can wind down, relax and feel comfortable being himself. Routine matters to him. So does having somewhere that feels safe and familiar.

## WHERE CONFIDENCE GROWS

If you want to understand Mathew, start in the backyard.

That's where the tomatoes climb, the zucchini grow fast and generous, and the mandarins hang bright against the leaves. It's where plans are made, lessons are learnt, and confidence grows quietly day by day.

For Mathew, gardening is more than growing food.

It's about showing up each day and learning as you go. Checking what needs watering. Pulling out weeds before they take over. Trying new ideas. Some things work; some don't. Thinking ahead to what might grow next season. "Gardening makes me feel brave," he says.

He also enjoys trips to Bunnings, where he can explore new tools, plants and ideas for his next project.

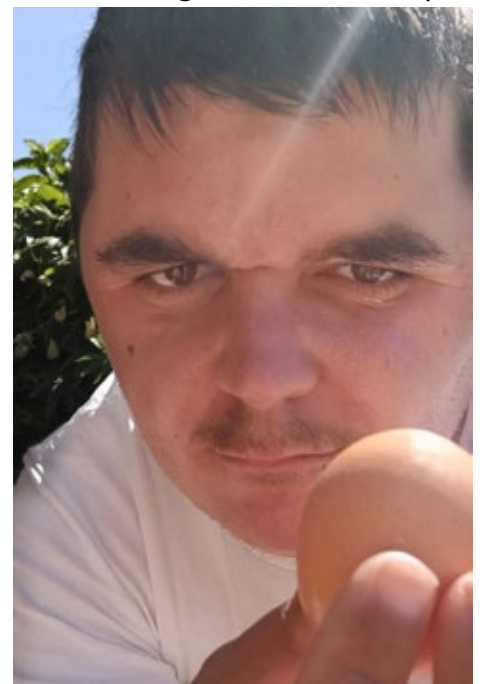
## THE "TWO-HAND CHICKEN SET-UP"

Out the back, there's another project Mathew talks about with a grin. His "two-hand chicken set-up."

It's practical and still evolving. The chickens lay eggs most weeks, sometimes one a day. Looking after them takes routine and responsibility. Feeding, cleaning, checking in.

"We've made the best possible we could," he says.

There's pride in that. It's not about having the fanciest setup.





It's about making it work and improving it step by step and making the best possible setup with what you have.

## SHARING WHAT HE LEARNS

Mathew doesn't keep his ideas to himself. He enjoys sharing gardening tips online and encouraging others to have a go. Through his TikTok gardening channel, he shares what he's growing, what's working, and simple tips people can try themselves.

He talks about making it fun and accessible. No pressure. Just practical advice.

He also shares ideas for community pantries, small market days, and giving away extra produce to places that can use it.

"I just thought—keep it fun. Give people tips," he says.

"Anyone can use it. It's for everyone."

It's a natural extension of who he is. Generous, community-minded, and happy to pass something on.

## A PERFECT DAY UNDER A BIG SKY

Ask Mathew about a perfect day

and he'll talk about the sea.

It usually starts early, around 6 or 7, with a plan in mind and a drive out under a wide, open sky. Fishing and crabbing are favourites. There's conversation, quiet moments, and the steady rhythm of the day unfolding by the water.

"We go fishing... then relax in the evening," he says.

Afterwards, he might grab something to eat on the way home, spend some time at the park, then settle in for dinner and a calm night. And when the day winds down, he looks up to the stars. In Whyalla, the sky stretches wide, and you don't have to go far to feel a sense of wonder.

"It's amazing," he says

For Mathew, the outdoors isn't just something he enjoys. It's where he feels most himself. Whether it's gardening, hiking, birdwatching, or stargazing, he's curious about the world and always keen to keep learning.



## CONNECTION THAT MATTERS

Mathew's world is shaped by people who know him well. Family, friends, and supportive workers who understand what matters to him and respect his goals. Time with his dad is especially important.

"Hanging out with my dad... that makes me feel loved," he says.

He values connection and knows when to reach out. With a strong support network around him, he's able to stay independent while still feeling understood and supported. At Whyalla SIL, he has the balance that works for him. Support when it matters, space to grow, and encouragement to keep trying new things.

## A LIFE THAT KEEPS GROWING

Mathew's story isn't loud or flashy. It's steady, grounded, and full of meaning in the everyday things. Time outdoors is a big part of who he is. Gardening, fishing, hiking, birdwatching, stargazing. He's curious about the world and always learning.

But more than anything, he's building a life that feels right to him.

Fresh eggs each week. Vegetables ready to pick. Early mornings by the sea. A house that feels like home, filled with music and people around him who care.

At Orana's Whyalla Supported Independent Living, Mathew has the space to live that life. One that reflects his big heart, his local roots, and the simple things that matter most.

And like his garden, it just keeps growing.

You can follow Mathew on TikTok @EyrePeninsulaBackyardVeggies





# BUILDING STRONGER SUPPORT THROUGH MENTAL HEALTH FIRST AID

Supporting people with disability means understanding the whole person, including their mental health and wellbeing. At Orana, we recognise the importance of equipping our team with the skills and confidence to respond to mental health challenges, ensuring participants feel safe, supported, and understood.

Thanks to the generous support of the CMV Group Staff Foundation, we have taken an important step forward in this space. Their recent donation has enabled 16 Orana staff members to complete accredited Mental Health First Aid training,

strengthening their ability to recognise the signs of mental health challenges and respond with care and confidence.

This initiative is already making a meaningful impact across our services, and it doesn't stop here. We are planning to enrol a further 20 staff members in upcoming training sessions, continuing to build these vital skills across our organisation.

The CMV Group, a long-standing South Australian organisation with a strong commitment to giving back to the community, plays an important role in supporting initiatives like this

through its foundation. This partnership marks Orana's first donation from the foundation, and we are incredibly grateful for their support.

Investing in our people ultimately strengthens the support we provide to the community. By building knowledge, confidence, and understanding around mental health, we are better equipped to support participants in every aspect of their lives.

We thank the CMV Group Staff Foundation for helping us continue to grow, learn, and deliver meaningful, person-centred support.



# ORANA COMMUNITY HIGHLIGHTS

## MILESTONES & FAREWELLS

We've celebrated several retirements at the start of 2026, with Joanne and Anna finishing up at Ridleyton and marking the end of their valued time with Orana. Both have been wonderful members of the team, and their contributions over the years have been greatly appreciated.

We also recognise Dean's incredible milestone of retiring after 51 years of service, with his final years spent at Netley. Reaching more than half a century with Orana is a truly remarkable achievement, and his dedication, positive attitude, and lasting impact will be remembered by many.

## NEW SPACES, NEW OPPORTUNITIES

We are pleased to provide an update on our supported employment facilities. All employees have now transitioned from Ridleyton to Netley or Para Hills West and are settling in well to their new environments. This transition marks an exciting new chapter, with opportunities to grow skills across different areas.

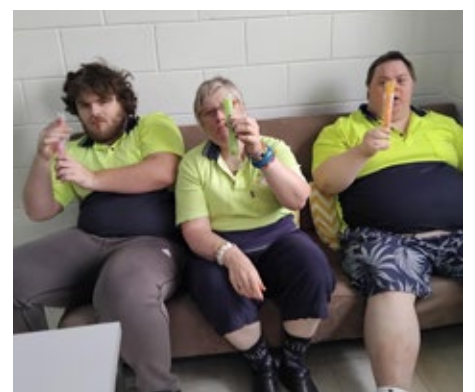
It's also been great to see employees trying new roles, with many stepping outside their usual tasks and excelling while enjoying the change.

One particularly good news story is Tom from the oil area recently smashing his SWS targets, a fantastic achievement!

## BEATING THE HEAT IN LOXTON

With temperatures reaching 47 degrees across two days in January, our Loxton team found the perfect way to cool down.

Jacob, Susan and Matthew enjoyed some well-earned Zooper Doopers, a simple way to stay cool and keep spirits high!



# ORANA WINS THE PEOPLE'S CHOICE CHRISTMAS TREE FESTIVAL

## ORANA WINS AT THE PORT AUGUSTA COMMUNITY CHRISTMAS TREE FESTIVAL

Orana Community Options has taken out 1st Place in the People's Choice Award at the Port Augusta City Council Community Christmas Tree Festival with their tree, "A Thrifty Christmas."

The annual festival brings together local organisations to design and decorate themed Christmas trees, with the wider community voting for their favourite. Orana's winning entry captured hearts with its thoughtful, resourceful approach, celebrating sustainability, creativity and the joy of making something special from simple materials.

The festive spirit didn't stop there. In a heartwarming



gesture, the 3rd place winners, the Department for Education Student Support Services and Department of Human Services, generously donated their \$50 prize money to Orana Community Options to help purchase craft supplies for the program. The act of kindness was a beautiful reflection of the community spirit that defines the festival.

Orana extends sincere thanks to everyone who helped create and voted for our tree. Congratulations to the Port Augusta Community Options team!

# TUNE IN THIS AUTUMN

## OUR TOP STREAMING PICKS



### ATYPICAL NETFLIX

This heartfelt comedy follows Sam, a teenager on the autism spectrum, who has decided he is ready for romance.

In order to start dating, and hopefully find love, Sam will need to be more independent, which also sends his mother on her own life-changing path. She and the rest of Sam's family, including a scrappy sister and a father seeking a better understanding of his son, must adjust to change and explore what it means to be 'normal'.

The series is created and written by Robia Rashid and Academy Award-winning producer Seth Gordon.



### THE PEANUT BUTTER FALCON NETFLIX

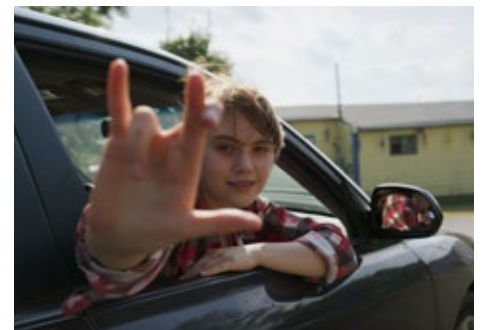
After running away from a residential nursing home to pursue his dream of becoming a pro wrestler, a man who has Down syndrome befriends an outlaw who becomes his coach and ally.

This feel good adventure story was written and directed by Tyler Nilson and Michael Schwartz and stars Shia LaBeouf, Dakota Johnson, Thomas Haden Church and debuting Zack Gottsagen. Gottsagen won the Palm Springs International Film Festival Rising Star Award and the Hollywood Critics Association Newcomer Award for his role.



### CODA APPLE TV

Seventeen-year-old Ruby (Emilia Jones) is the sole hearing member of a deaf family, a CODA (Child Of Deaf Adults). Her life revolves around acting as interpreter for her parents (Marlee Matlin, Troy Kotsur) and working on the family's struggling fishing boat every day before school with her father and older brother (Daniel Durant). But when Ruby joins her high school's choir club, she discovers a gift for singing and soon finds herself drawn to her duet partner Miles (Ferdia Walsh-Peelo). Encouraged by her enthusiastic, tough-love choirmaster (Eugenio Derbez) to apply to a prestigious music school, Ruby finds herself torn between the obligations she feels to her family and the pursuit of her own dreams.



Want to share your favourite TV show, movie or podcast? Send us an email and let us know you love it!

Let us know at [communications@orana.asn.au](mailto:communications@orana.asn.au)

# IN THE COMMUNITY

## APRIL

### GATHER ROUND

**WHAT:** AFL Gather Round celebrates all things Footy in South Australia over one action-packed weekend—18 teams, 9 games, and one massive Festival of Footy. Games will be played in the Barossa, Norwood and at Adelaide Oval while the Festival of Footy takes over the state.

**WHERE:** Adelaide Oval, Lyndoch, Norwood

**MORE INFO:** [afl.com.au/gather-round](http://afl.com.au/gather-round)



## APRIL

### ADELAIDE EQUESTRIAN FESTIVAL

**WHAT:** Tasting Australia is one of the country's longest running eating and drinking festivals. Events are held at restaurants and venues throughout the state showcasing a variety of SA's best food and beverages along with the Town Square in Victoria Square which serves as a hub for the event.

**WHERE:** Adelaide Parklands

**MORE INFO:** [adelaideequestrianfestival.com](http://adelaideequestrianfestival.com)



## MAY

### TASTING AUSTRALIA

**WHAT:** Tasting Australia is one of the country's longest running eating and drinking festivals. Events are held at restaurants and venues throughout the state showcasing a variety of SA's best food and beverages along with the Town Square in Victoria Square which serves as a hub for the event.

**WHERE:** Venues across SA

**MORE INFO:** [tastingaustralia.com.au](http://tastingaustralia.com.au)



## JUNE

### ADELAIDE CABARET FESTIVAL

**WHAT:** Running throughout June, the dazzling Adelaide Cabaret Festival will see some of the world's biggest acts sashay across the stage at venues throughout Adelaide. The Adelaide Cabaret Festival is the largest festival of its kind in the world.

**WHERE:** Venues across Adelaide

**MORE INFO:** [cabaret.adelaidefestivalcentre.com.au](http://cabaret.adelaidefestivalcentre.com.au)



# 2025 EVENTS

APRIL		MAY		JUNE	
10	Club Strike	1	Club Strike	5	Club Strike
14-16	School Holiday Short Breaks ( <i>under 18</i> )	8-10	Weekend Short Breaks	12	Orana Art Exhibition
17	Club Slick	15	Club Slick	19	Club Slick
				29	Dance Down Mid-Year Concert
JULY		AUGUST		SEPTEMBER	
3	Club Strike	7	Club Strike	4	Club Strike
17	Club Slick	14-16	Weekend Short Breaks	18	Club Slick
		21	Club Slick	29-1 Oct	School Holiday Short Breaks ( <i>under 18</i> )
OCTOBER		NOVEMBER		DECEMBER	
2	Club Strike	6	Club Strike	4	Club Strike
16	Club Slick	13-15	Weekend Short Breaks	4	An Evening Under the Stars
		20	Club Slick	7	Dance Down Concert
				18	Club Slick

\*Some event dates may change.



# YOUR NEW HOME AWAITS YOU

**ORANA HAS A NUMBER OF VACANCIES LOCATED  
ACROSS METROPOLITAN SOUTH AUSTRALIA.**



**Orana's SIL gives people with different support needs a safe place to live in the community, without giving up their independence.**

**Make a life that works for you:**

Live the life you want knowing that you are well supported.

**Balance freedom and safety:**

Your well-being always comes first. You will have a safe and comfortable place to live while encouraging you to do the things you enjoy.

**Build confidence to be more independent:**

Orana will encourage you in a way that helps build your confidence and belief in your own abilities.

**More social opportunities:**

SIL provides a community where you can socialise with people who share common interests.

Orana values each person's uniqueness and doesn't take a one size fits all approach. The support you receive is adjusted to meet your changing needs, goals, and funding in your NDIS plan.

This can be anywhere from just a few hours each week and may include:

- Help with menu planning, shopping, and cooking
- Support attending activities in the community
- Assistance with attending medical appointments and taking care of medications
- Help in taking care of yourself

[Want to see more?](#)

[View all vacancies online at  
oranaonline.com.au](http://oranaonline.com.au)

# HOMECONNECT

**EXCLUSIVE EXTRAS WHEN YOU MOVE IN TO SUPPORTED INDEPENDENT LIVING VALUED AT OVER \$4,500!**



## **Moving in just got even better at Orana's Supported Independent Living!**

HomeConnect is available to all new SIL clients to help them settle in, stay connected, and feel part of the community. Check out all of these exclusive extras, valued at over \$4,500.

**Free internet** – Stay connected at no extra cost. (Value \$700)

**1-year free entry to Club Slick\*** – Enjoy Adelaide's premier social event for people with disability. (Value \$200)

**6x free Dance Down Classes\*** – Have fun, stay active, and boost confidence! (Value \$360)

**12 x Full-Day Sessions at Orana's Community Options Program\*** – Access engaging programs and day activities. (Value \$2,500)

**Access to monthly social activities** – Meet new people and build friendships in a supportive environment.

**\$1,000 furniture voucher \*\*** – Make your new space feel like home.

*\* to be used within the first 12 months and only available in the Adelaide metro area\**

*\*\* conditions apply*

With HomeConnect, new clients can look forward to not just a new place to live, but a vibrant, connected lifestyle. Whether it's making new friends, staying active, or simply feeling more at home, Orana is committed to supporting every step of the journey.

## CLARENCE PARK

### SPACIOUS HOME IN THE INNER SOUTH

#### Welcome to your new home!

We are delighted to announce the availability for participants in our charming and spacious four-bedroom houses in our SIL community ready to rent.

These charming, purpose-built homes are situated together in a quiet, leafy suburb, close to the city, beach, shops, and medical centres. There are currently four vacancies at our Clarence Park location.

### SUPPORT BENEFITS

**24/7 Support:** Staff is available around the clock to provide personalised support.

**Engaging Activities:** Participate in a variety of community activities designed to promote social interaction and personal development.

**Accessible Facilities:** Our community is designed with accessibility in mind, ensuring a safe and accommodating environment for all tenants.



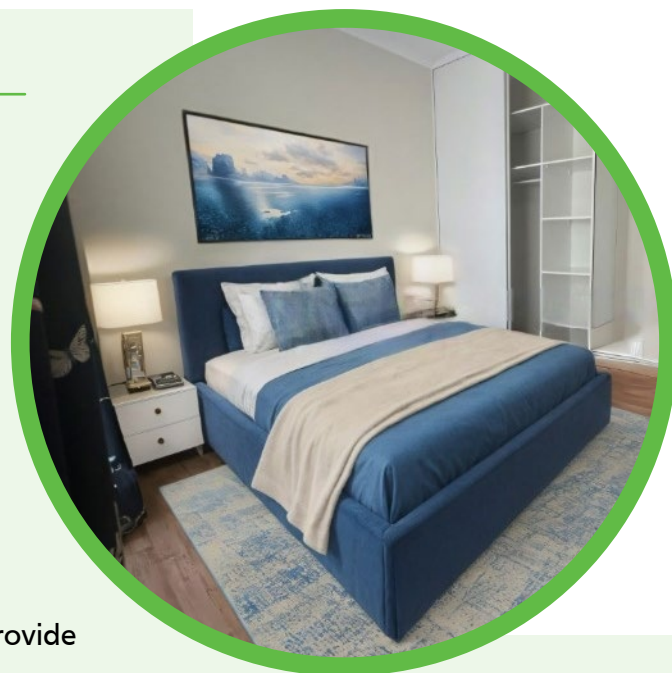
5 x Room  
Available



4 x Other  
Tenants



3 x Bathrooms



### PROPERTY FEATURES

**Good Sized Bedroom/s:** Bedroom offers ample space and natural light, providing a comfortable and inviting atmosphere. The bedroom on offer is not furnished.

**Open Plan Living Area:** The living room seamlessly connects with the dining area, creating a versatile space for relaxation and socialising.

**Fully Equipped Kitchen:** Includes appliances, plenty of storage, and a user-friendly layout, perfect for preparing meals with ease.

**Outdoor Space:** Enjoy the communal recreational space, ideal for outdoor activities and enjoying the fresh air.



Tenant must be 18 years or older, and must have funding in their NDIS plan or funding from an alternative source.

Tenant will need to sign a tenancy agreement, pay rent and contribute to household expenses such as groceries and utilities.



Call our team on  
08 8375 2000  
to arrange a viewing  
of this Supported  
Independent  
Living vacancy.

## LOXTON

### ARCHITECTURALLY DESIGNED HOME

#### Welcome to your new home!

We are delighted to announce the availability of a two spacious houses in our Supported Independent Living (SIL) community in the Riverland area, **Gumview** and **Kurrajong**.

**Gumview** has a vacancy that would be ideal for a male NDIS participant. **Kurrajong** has two vacancies that would be suitable for two female NDIS participants.

### SUPPORT BENEFITS

**24/7 Support:** Staff is available around the clock to provide personalised support.

**Engaging Activities:** Participate in a variety of community activities designed to promote social interaction and personal development.

**Accessible Facilities:** Our community is designed with accessibility in mind, ensuring a safe and accommodating environment for all tenants.



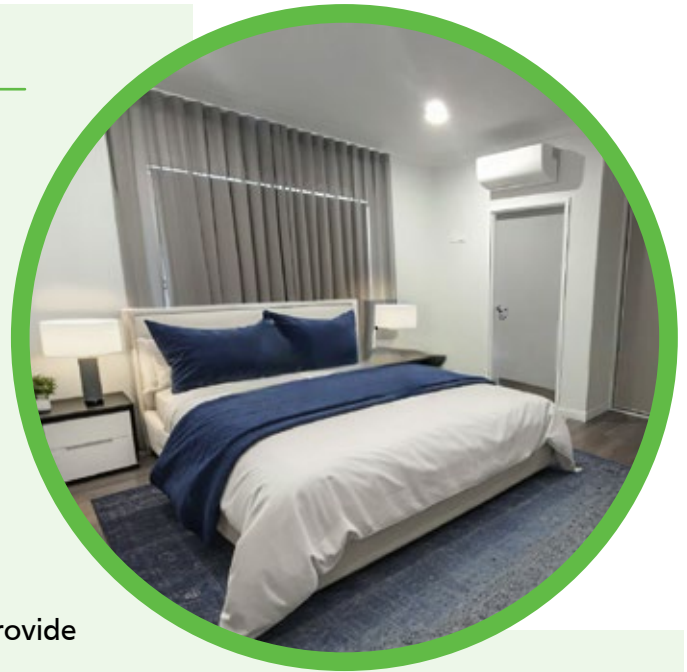
2 x Rooms  
Available



1 x Other  
Tenants



3 x Bathrooms



### PROPERTY FEATURES

#### Good Sized Bedroom/s:

Bedroom offers ample space and natural light, providing a comfortable and inviting atmosphere. The bedroom on offer is not furnished.

#### Open Plan Living Area:

The living room seamlessly connects with the dining area, creating a versatile space for relaxation and socialising.

#### Fully Equipped Kitchen:

Includes appliances, plenty of storage, and a user-friendly layout, perfect for preparing meals with ease.

#### Outdoor Space:

Enjoy the communal recreational space, ideal for outdoor activities and enjoying the fresh air.



Tenant must be 18 years or older, and must have funding in their NDIS plan or funding from an alternative source.

Tenant will need to sign a tenancy agreement, pay rent and contribute to household expenses such as groceries and utilities.



Call our team on  
08 8375 2000  
to arrange a viewing  
of this Supported  
Independent  
Living vacancy.

A woman with glasses and a blue floral dress is dancing joyfully at a social event. She has her arms raised and is smiling. In the background, other people are visible, including one wearing a white face mask. The setting appears to be an indoor venue with tables and chairs.

**EVERYONE  
HAS A STORY.  
WHAT'S  
YOURS?**

**DO YOU HAVE A STORY YOU  
WOULD LIKE TO SHARE IN  
ORANABILITY?**

Contact Communications at  
[communications@orana.asn.au](mailto:communications@orana.asn.au)  
to find out how.