



# SPACIOUS HOME IN THE ADELAIDE'S SOUTH

## CLOVELLY PARK



1x Room Available



2x Other Tenants



2x Bathrooms



**Welcome to your new home!**

Looking for high-quality Supported Independent Living (SIL) housing under the NDIS? We currently have one vacancy perfect for a female NDIS participant seeking independence with tailored support.

Our open and airy Clovelly Park property is home to up to three residents. The open plan kitchen, living and dining opens to an alfresco overlooking a neat and low-maintenance rear garden. This home is within walking distance to public transport, local reserves, shops and medical facilities.

**orana**  
Creating Opportunities



## SUPPORT BENEFITS.

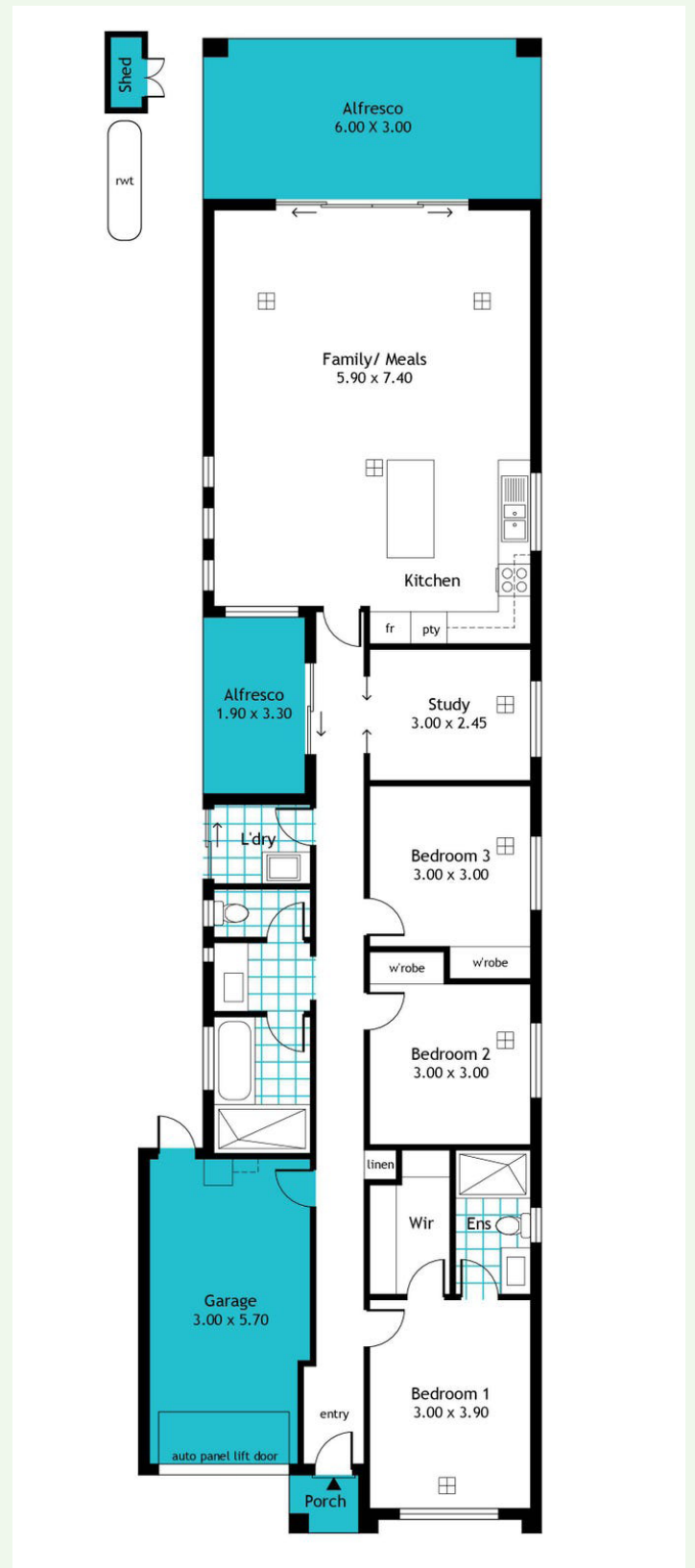
- **24/7 Support:** Staff is available around the clock to provide personalised support.
- **Engaging Activities:** Participate in a variety of community activities designed to promote social interaction and personal development.
- **Accessible Facilities:** Our home is designed with accessibility in mind, ensuring a safe and accommodating environment for all tenants.

## PROPERTY FEATURES.

- **Good Sized Bedroom/s:** Bedroom offers ample space and natural light, providing a comfortable and inviting atmosphere. The bedroom on offer is not furnished.
- **Open Plan Living Area:** The living room seamlessly connects with the dining area, creating a versatile space for relaxation and socialising.
- **Fully Equipped Kitchen:** Includes appliances, plenty of storage, and a user-friendly layout, perfect for preparing meals with ease.
- **Outdoor Space:** Low maintenance front and back yards with two alfresco areas.

## PROPERTY FEATURES.

- Tenant must be 18 years or older, and must have funding in their NDIS plan or funding from an alternative source.
- Tenant will need to sign a tenancy agreement, pay rent and contribute to household expenses such as groceries and utilities



## CONTACT US.



Call our team on  
08 8375 2000 to arrange  
a viewing of this  
Supported Independent  
Living vacancy.

Please note, furniture for staging purposes only.  
Tenants will be required to supply their own furniture.